

Tailfeathers Guide Service has the experience

Mike "Duck" Fisher, owner of Tailfeathers Guide Service, invites you to make a hunt with him.

With over 35 years of experi-

ence guiding waterfowl hunters, I believe in making your hunt the best hunt possible.

The location on the Eagle Lake

prairie, 60 miles west of Houston, includes rice fields, flooded timber and prairie ponds for duck hunting, as well as plowed ground,

rice and oat fields for goose hunting.

All duck hunting is done from blinds, yes, REAL blinds, fiberglass pit blinds and stick up blinds with tops, seats, floors and gun rests. No sitting in the water on buckets!

If you are tired of hunting with "Guides" who don't know a Pintail from a Porcupine, "Guides" who spend more time calling their dog than ducks, then give Tailfeathers a try.

We shoot decoying birds... no sky blasting.

Hunt with guides who love to

hunt, hunt everyday and will do their dead level best to make sure you kills birds and have a great hunt.

I have the highest bird per man average during Snow Goose Only season than any club in Colorado County.

No Brag... Just Fact!

I offer quality hunts at fair prices.

For reservations, call "Duck" at 979-732-7549 (mobile) or 979-732-2997. We're on the web at www.tailfeathersguideservice.com.

(See my advertisement on Page 13 of this publication.)

Know your deer

White-Tailed

A small deer with short ears. The tail is fairly long, broad basally and white underneath.

In summer the upper parts are reddish brown, but winter turns them bright grayish fawn sprinkled with black.

The face and tail usually lack blackish markings.

The underparts are white. The metatarsal gland is small and circular.

All major points of the antlers come off the main beam and females are normally antlerless.

Mule

A moderately large deer with large ears.

The tail usually has a black tip

and white basal portion.

The upper parts in winter are cinnamon buff overspread with blackish color, but more reddish in summer.

The brow patch is whitish and the ears are grayish on the outside and whitish inside. The underparts

are white.

The metatarsal gland is three to five inches long, narrow and is positioned above the midpoint of the shank.

The antlers are typically divided into branches and restricted almost entirely to males.

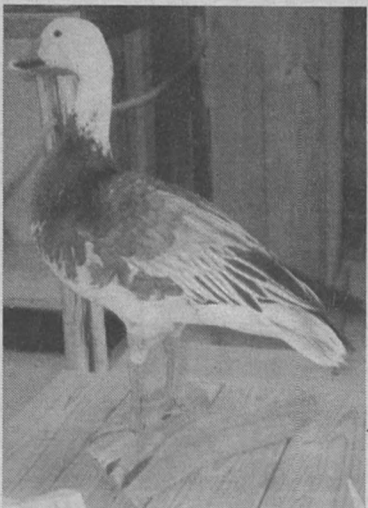


B&S offers unique mountings

Bobby Wied, owner of B&S Taxidermy, offers more than a run-of-the-mill mounting for your trophies.

Above are a bobcat and a Gadwall he has done.

The goose below looks like it could walk off the page. Stop by his business at 221 E. Main in Eagle Lake to see more of his original work.



Come Enjoy The
"BEST FOOD IN TEXAS"
AWARD WINNING...

SPORTSMAN'S RESTAURANT

201 Boothe Drive Eagle Lake 979-234-3071

Enjoy Our...

Breakfast Buffet

During Hunting Season

We Serve:
HAND-SELECTED...

•T-Bone •Shrimp •Catfish •Quail
 & Hand-Cut Rib Eye Steaks

Seafood Gumbo!

Cajun & Mexican Food Steaks & Seafood

Charcobreiled Chicken & Catfish

Take advantage of our...
LUNCH & DINNER SPECIALS
Or, from our menu, enjoy...

*Boiled Shrimp *Seafood Platters *Homemade Onion Rings
 *Fresh Hand-formed Hamburgers *Homemade Desserts

PLENTY OF PARKING
Janie & Doug Schwemm, Proprietors
We Cater!
Ask About Our Lodge Accommodations!

